



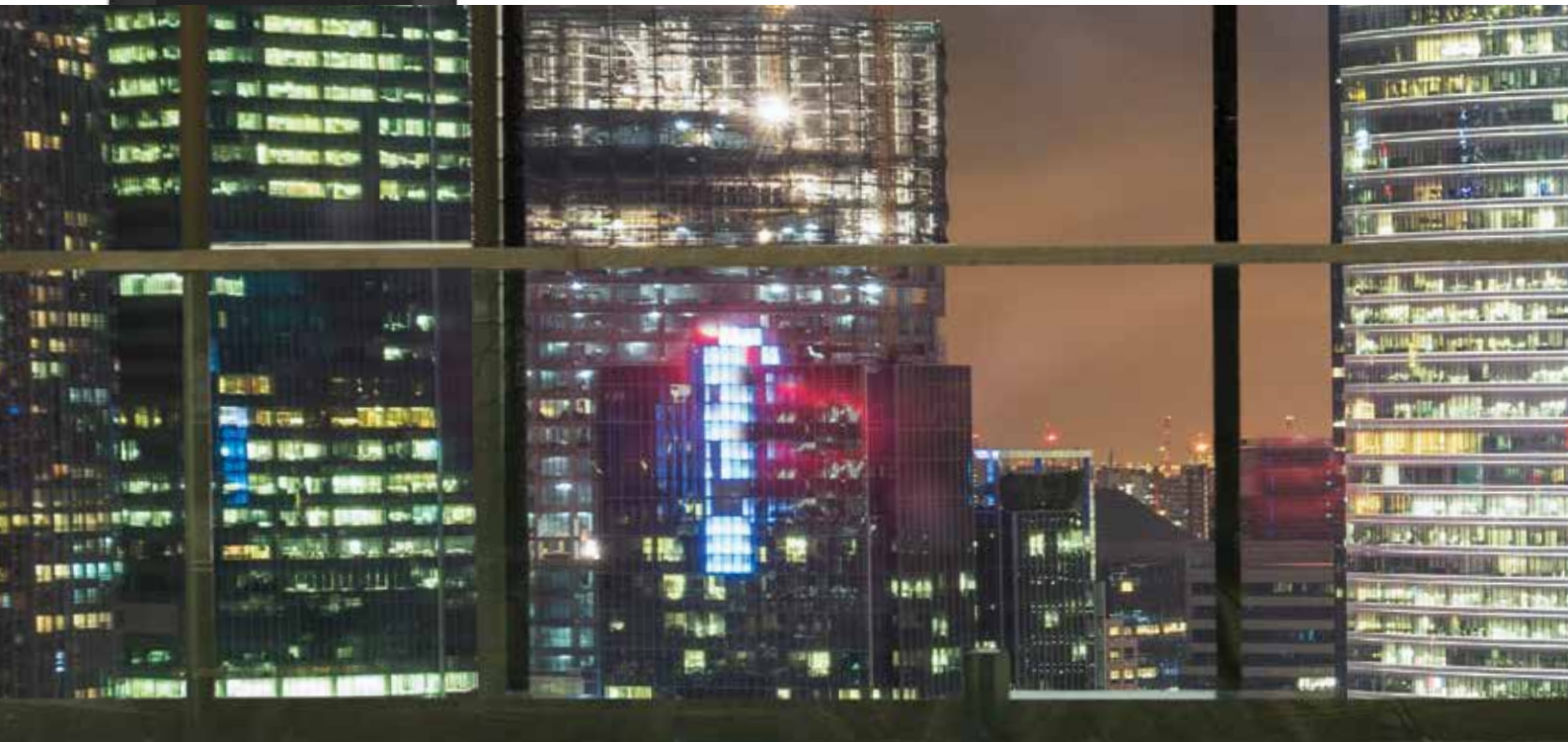
INSTANT COMMUNICATION, PROFESSIONAL STYLE.

MOTOTRBO™ SL2600 PORTABLE TWO-WAY RADIO





MOTOTRBO SL2600 PORTABLE TWO-WAY RADIO PERFECTLY SUITED FOR BUSINESS



YOUR BUSINESS RELIES ON INSTANT COMMUNICATION TO PROVIDE EXCEPTIONAL SERVICE. BUT YOU WANT A DEVICE THAT PROJECTS A SOPHISTICATED PROFESSIONAL IMAGE, NOT A BULKY ONE THAT GETS IN THE WAY.



KEY BENEFITS

- Beautifully designed
- Virtual keypad and display
- Bluetooth® connectivity
- Integrated Wi-Fi®
- Systems capable



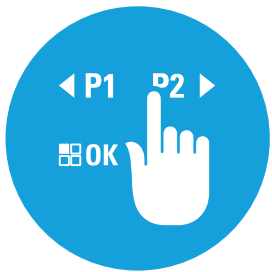
Slim and lightweight, the MOTOTRBO SL2600 portable two-way radio provides instant communication in a stylish and discreet design. It blends seamlessly with professional attire, allowing you to move freely. At the same time, it's durable and built to last.

The SL2600 is designed with a virtual keypad and display, giving you quick access to key radio functions along with information at a glance - all without compromising your style. Connect discreetly to Bluetooth® earpieces and sensors, maintaining a smart look.

Access Wi-Fi networks for over-the-air software updates. Or, if you work in a larger organization, use the radio on trunking systems that support both data and voice.

And the SL2600 is part of Team Communications, our unified workgroup communications solution that allows employees to communicate instantly, without boundaries, and with added intelligence across the entire organization.

The MOTOTRBO SL2600 portable two-way radio. Perfectly suited for business.



DISCREET PRODUCTIVITY

THE MOTOTRBO SL2600 PORTABLE TWO-WAY RADIO USES A VIRTUAL KEYPAD AND DISPLAY FOR DEVICE CONTROL AND STATUS MESSAGES, LIGHTING UP WHEN YOU NEED IT AND GOING DARK WHEN YOU DON'T.

It simulates the feel and responsiveness of a physical keypad, allowing you to customize the buttons to vibrate, sound a tone, or stay silent. And its two-line OLED display gives you important information at a glance, including battery life, signal strength, current channel, and scrolling messages.

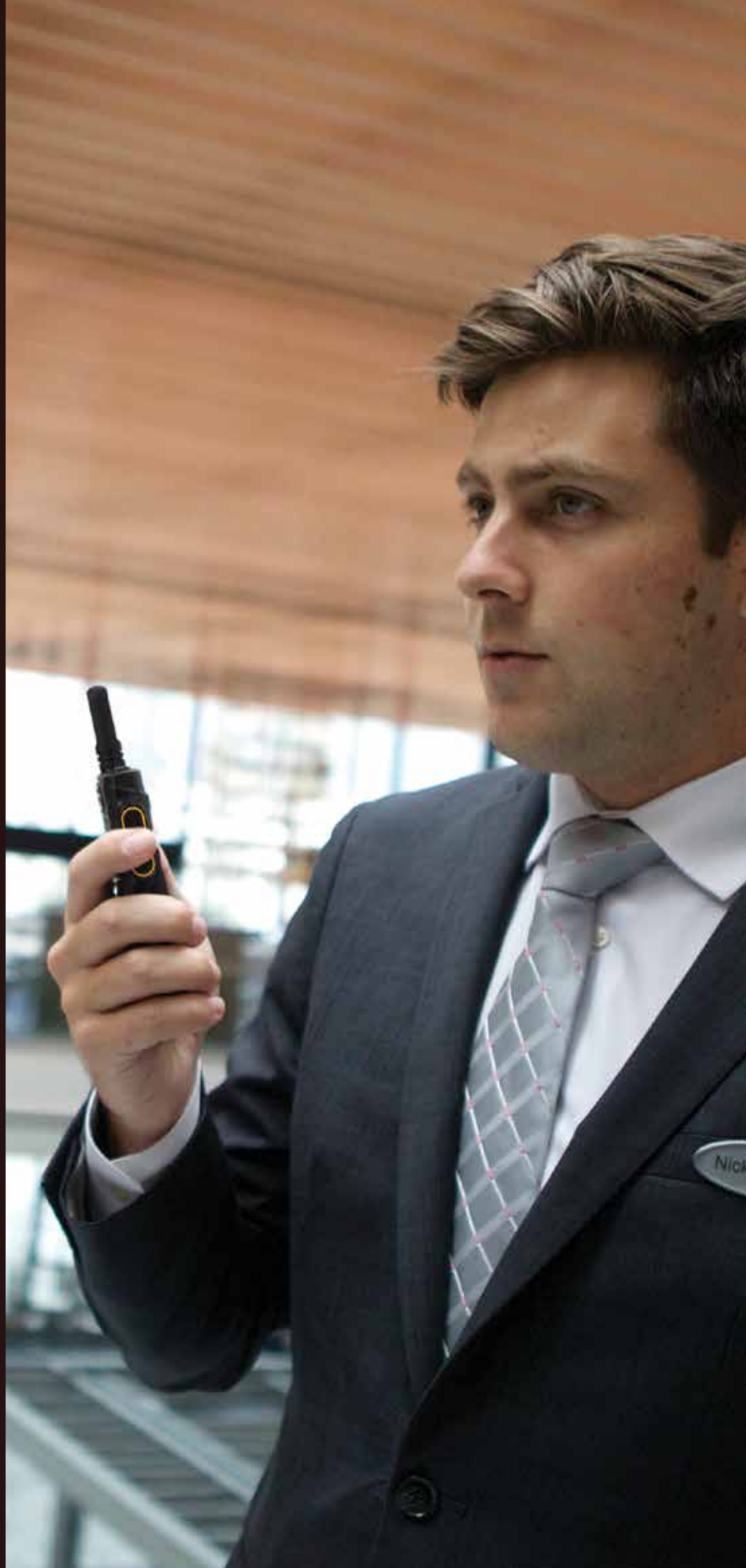




SUITS YOUR STYLE

SLIM, LIGHTWEIGHT,
AND SOPHISTICATED,
THE MOTOTRBO
SL2600 PORTABLE
TWO-WAY RADIO
GIVES YOU INSTANT
COMMUNICATION -
WITHOUT THE BULKY
LOOK AND FEEL OF A
TRADITIONAL RADIO.

At just 23 mm, 0.9", it fits easily in your hand, or discreetly in a suit jacket or pants pocket. At only 190g, 6.7 oz, you can move freely and comfortably without being weighed down. Sleek and attractive, the SL2600 blends with business attire and enhances your professional look.





TALK HANDS-FREE

**IN ANY PROFESSION
WHERE IMAGE MATTERS,
IT'S IMPORTANT TO
MAINTAIN A SMART,
ORGANIZED APPEARANCE.**

The MOTOTRBO SL2600 portable two-way radio connects with wireless accessories such as Bluetooth earpieces, allowing you to keep your radio out of sight - but not out of touch. Use apps with iBeacons to locate employees at a moment's notice. And as Bluetooth sensors become more prevalent in the workplace, the SL2600 is ready to work with your new devices and apps.



OVER-THE-AIR UPDATES

YOUR TEAM SHOULD SPEND TIME HELPING CUSTOMERS, NOT MANAGING RADIOS. WITH BUILT-IN WI-FI, THE SL2600 CAN BE UPDATED OVER-THE-AIR.

Instead of programming devices one by one, IT managers can save valuable time by sending updates to the entire fleet. No more connecting cables by hand. No more taking radios out of service.

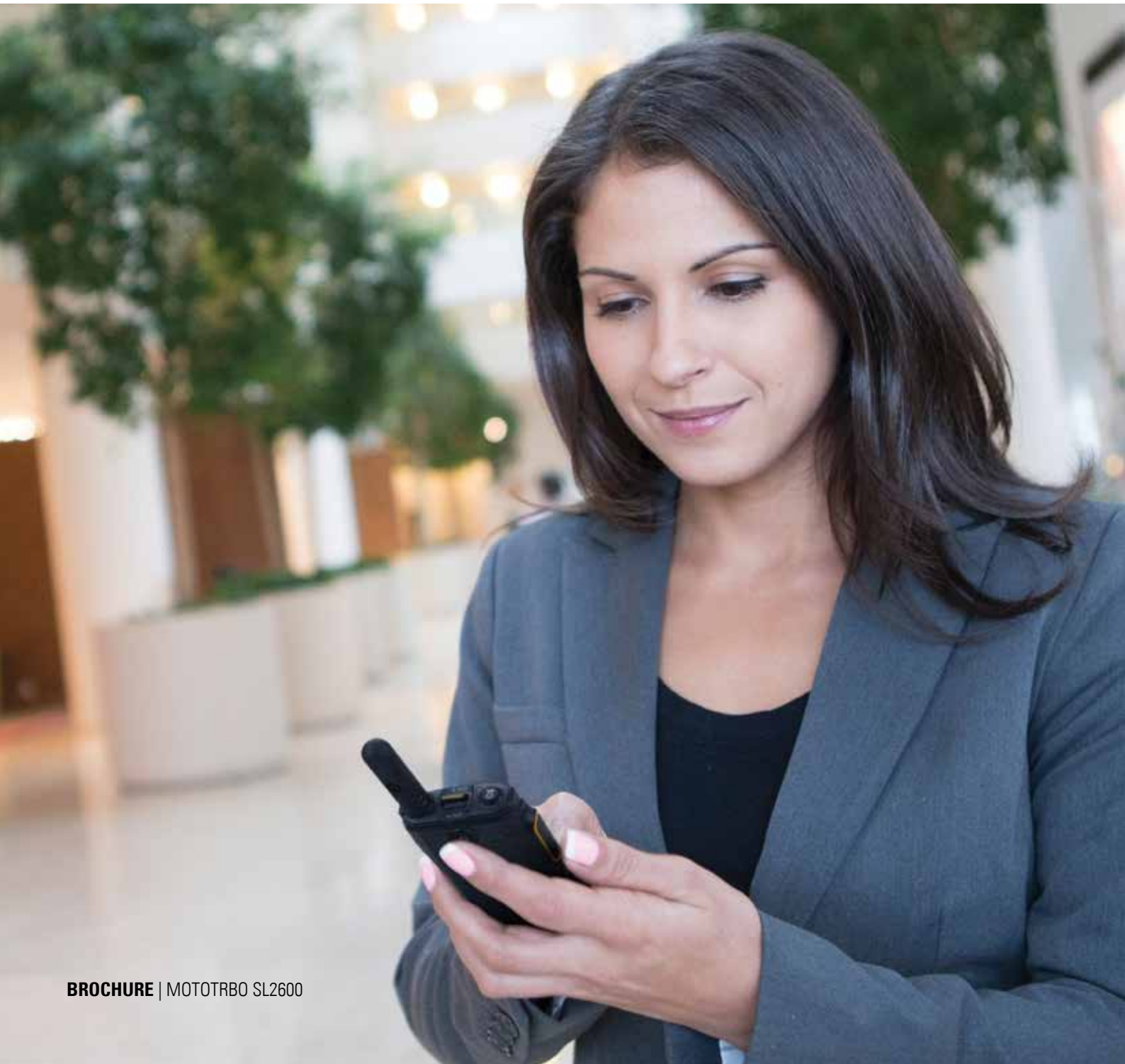




READY FOR MORE

MOTOTRBO SYSTEMS ARE SCALABLE SO YOUR NETWORK CAN GROW WITH YOU.

The SL2600 supports conventional operation for single sites and IP Site Connect so you can link multiple locations into a single network. Or scale up to Capacity Plus for higher call capacity thanks to the efficient channel and spectrum usage of MOTOTRBO trunking.





UNITE YOUR TEAM

THE SL2600 IS
PART OF TEAM
COMMUNICATIONS,
OUR UNIFIED
WORKGROUP
COMMUNICATIONS
SOLUTION.

Team Communications allows employees to communicate instantly, without boundaries, and with added intelligence across the entire organization. Pair MOTOTRBO products with WAVE push-to-talk and other data solutions to enable machines, applications and people to connect seamlessly, helping bridge the gaps so work gets done faster.





PACKED WITH FEATURES





ACCESSORIES

MAKE THE MOST OF YOUR SL2600 WITH MOTOTRBO ACCESSORIES.

By spending countless hours in the field with customers, we've developed accessories that aren't just the most innovative. But also the most useful.



PMLN7190
Carry Holder/Holster
with Swivel Belt Clip



PMLN6074
Nylon Wrist Strap

CHOOSE FROM:

- Antennas - VHF or UHF
- Carry accessories
- Chargers - single and multi-unit
- Earbuds and earpieces
- Headsets

For a complete list of accessories, please visit www.motorolasolutions.com/SL2600



For more information and a complete list of accessories,
please visit: motorolasolutions.com/SL2600

Motorola Solutions Ltd. Nova South, 160 Victoria Street, London, SW1E 5LB, UK.

Availability is subject to individual country law and regulations. All specifications shown are typical unless otherwise stated and are subject to change without notice.

MOTOROLA, MOTO, MOTOROLA SOLUTIONS and the Stylized M Logo are trademarks or registered trademarks of Motorola Trademark Holdings, LLC and are used under license. All other trademarks are the property of their respective owners. © 2017 Motorola Solutions, Inc. All rights reserved. EMEA v1 0917

 **MOTOROLA SOLUTIONS**